

TVR2B/D/G/J

PRV : 100 - 600 Volts
Io : 0.5 Ampere

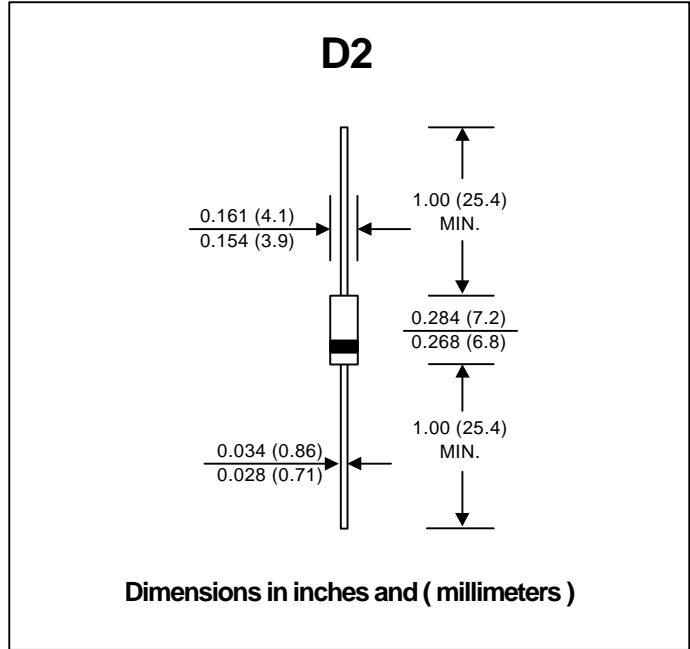
FEATURES :

- * High current capability
- * High surge current capability
- * High reliability
- * Low reverse current
- * Low forward voltage drop
- * Fast switching for high efficiency
- * **Pb / RoHS Free**

MECHANICAL DATA :

- * Case : D2 Molded plastic
- * Epoxy : UL94V-O rate flame retardant
- * Lead : Axial lead solderable per MIL-STD-202, Method 208 guaranteed
- * Polarity : Color band denotes cathode end
- * Mounting position : Any
- * Weight : 0.465 gram

FAST RECOVERY RECTIFIER DIODES



MAXIMUM RATINGS AND ELECTRICAL CHARACTERISTICS

Rating at 25 °C ambient temperature unless otherwise specified.
Single phase, half wave, 60 Hz, resistive or inductive load.
For capacitive load, derate current by 20%.

| RATING | SYMBOL | TVR2B | TVR2D | TVR2G | TVR2J | UNIT |
|--|--------|---------------|-------|-------|-------|------|
| Maximum Recurrent Peak Reverse Voltage | VRRM | 100 | 200 | 400 | 600 | V |
| Maximum Reverse Voltage (DC) | VR | 50 | 100 | 300 | 500 | V |
| Maximum Average Forward Current | IF(AV) | 0.5 | | | | A |
| Maximum Peak One Cycle Surge Forward Current (Non-repetitive) | IFSM | 30 (50Hz) | | | | A |
| Maximum Peak Forward Voltage at IF = 1.0 A | VF | 1.4 | | | | V |
| Maximum Repetitive Reverse Current at VRRM | IRRM | 10 | | | | µA |
| Maximum Reverse Recovery Time (Note 1) | Trr | 20 | | | | µs |
| Junction Temperature Range | TJ | - 40 to + 125 | | | | °C |
| Storage Temperature Range | TSTG | - 40 to + 125 | | | | °C |

Notes :

(1) Reverse Recovery Test Conditions : IF = 20 mA, IR = 1 mA.

RATING AND CHARACTERISTIC CURVES (TVR2B/D/G/J)

FIG.1 - REVERSE RECOVERY TIME CHARACTERISTIC AND TEST CIRCUIT DIAGRAM

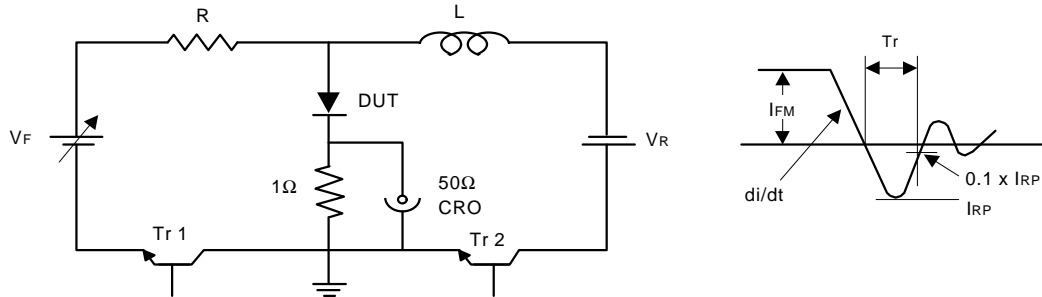


FIG.2 - DERATING CURVE FOR OUTPUT RECTIFIED CURRENT

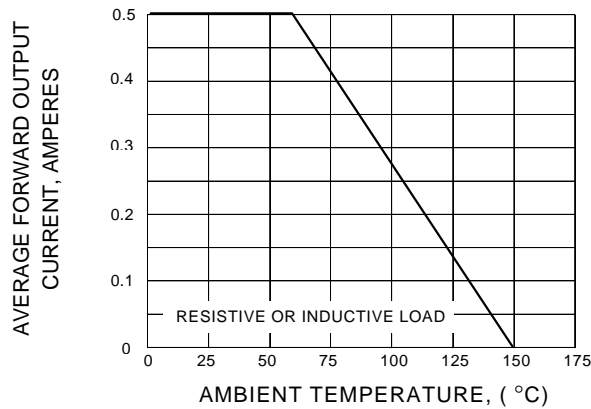


FIG.3 - MAXIMUM NON-REPETITIVE PEAK FORWARD SURGE CURRENT

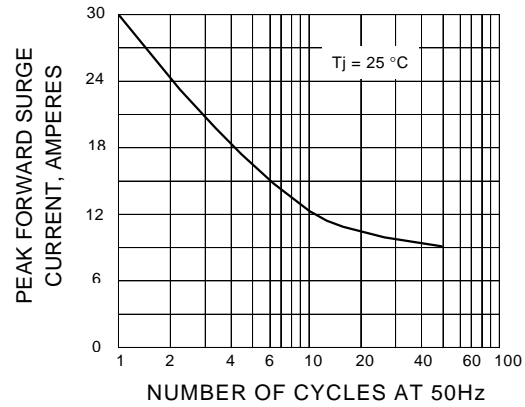


FIG.4 - TYPICAL FORWARD CHARACTERISTICS

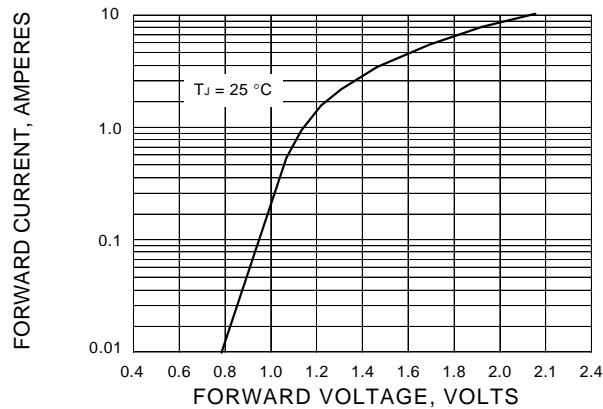


FIG.5 - TYPICAL REVERSE CHARACTERISTICS

