

**Client : Electronics Industry Public Company Limited  
103, 117 Moo 4, EPZ 1, Lat Krabang Industrial Estate,  
Lat Krabang, Bangkok 10520 Thailand**

The following sample(s) was/were submitted and identified by/on behalf of the client as:

Sample Description : Melf , Mini - Melf  
Sample No. : 1448207  
Sample Condition : As per attached photograph  
Part No. : M8010821  
Batch/Lot No. : M8010821

Sample Receiving Date : 18-Jan-2008  
Testing Period : 18-Jan-2008 to 23-Jan-2008

Test Requested : In accordance with the RoHS Directive 2002/95/EC and its amendment directives

Test Method : (1) With reference to EPA Method 3050B for Lead Content. Analysis was performed by ICP-OES.  
(2) With reference to EPA Method 3050B for Cadmium Content Analysis was performed by ICP-OES.  
(3) With reference to wet decomposition method for Mercury Content Analysis was performed by ICP-OES.  
(4) With reference to EPA Method 3060A & 7196A for Hexavalent Chromium. Analysis was performed by UV/Vis Spectrometry.  
(5) With reference to USEPA 3540C for PBB/PBDE content. Analysis was performed by GC/MS.

Test Results : Please refer to next page.

Signed for and on behalf of  
SGS (Thailand) Limited



**Pornpana Lirathpong  
Hardlines Testing Manager**

TEST RESULTS

Test results by chemical method (Unit: mg/kg)

Test Item (s):	Method (Refer to)	Result (1)	MDL	RoHS Limit
Lead (Pb)	(1)	n.d.	2	1000
Cadmium (Cd)	(2)	n.d.	2	100
Mercury (Hg)	(3)	n.d.	2	1000
Hexavalent Chromium (CrVI)	(4)*	n.d.	2	1000
sum of PBBs	(5)	n.d.	-	1000
Monobromobiphenyl		n.d.	5	-
Dibromobiphenyl		n.d.	5	-
Tribromobiphenyl		n.d.	5	-
Tetrabromobiphenyl		n.d.	5	-
Pentabromobiphenyl		n.d.	5	-
Hexabromobiphenyl		n.d.	5	-
Heptabromobiphenyl		n.d.	5	-
Octabromobiphenyl		n.d.	5	-
Nonabromobiphenyl		n.d.	5	-
Decabromobiphenyl		n.d.	5	-

1124956

This Test Report is issued by the Company subject to its General Conditions of Service printed overleaf or available on request and accessible at [www.sgs.com](http://www.sgs.com). Attention is drawn to the limitations of liability, indemnification and jurisdictional issues defined therein. Unless otherwise stated the results shown in this test report refer only to the sample(s) tested. This test report cannot be reproduced, except in full, without prior written permission of the Company. Any unauthorized alteration, forgery or falsification of the content or appearance of this report is unlawful and offenders may be prosecuted to the fullest extent of the law.

TEST RESULTS

Test results by chemical method (Unit: mg/kg)

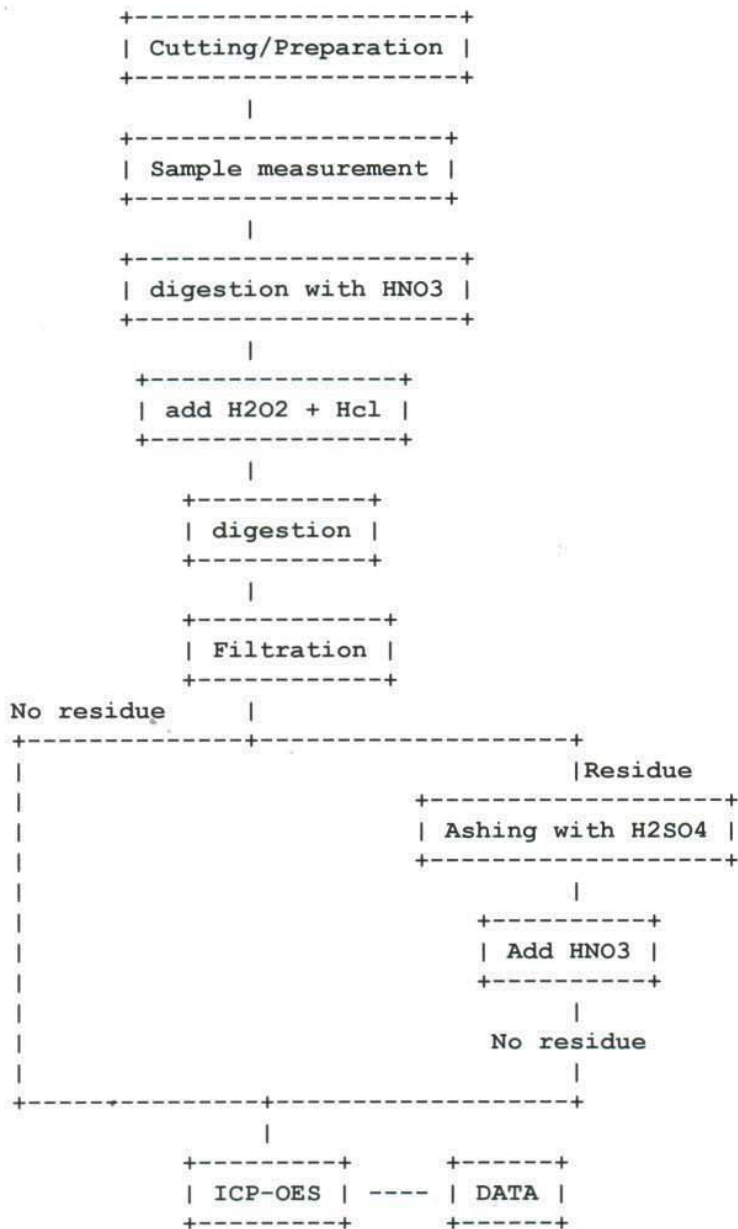
Test Item (s):	Method (Refer to)	Result (1)	MDL	RoHS Limit
Sum of PBDEs (Mono to Nona) (Note 4)	(5)	n.d.	-	1000
Monobromodiphenyl ether		n.d.	5	-
Dibromodiphenyl ether		n.d.	5	-
Tribromodiphenyl ether		n.d.	5	-
Tetrabromodiphenyl ether		n.d.	5	-
Pentabromodiphenyl ether		n.d.	5	-
Hexabromodiphenyl ether		n.d.	5	-
Heptabromodiphenyl ether		n.d.	5	-
Octabromodiphenyl ether		n.d.	5	-
Nonabromodiphenyl ether		n.d.	5	-
Decabromodiphenyl ether		n.d.	5	-
Sum of PBDEs (Mono to Deca)		n.d.	-	-

Test Part Description  
Result (1) metal

Note :

- (1) mg/kg = ppm
- (2) n.d. = Not Detected
- (3) MDL = Method Detection Limit
- (4) Sum of Mono to NonaBDE & according to 2005/717/EC DecaBDE in polymeric is exempt.
- (5) "-" = Not regulated
- (6) "\*" " Test method for hexavalent chromium is requested by the client and would not comply with certain OEMs or automotive assemblers requirements.

Flow chart of digestion (EPA 3050B for Pb)



The samples were dissolved totally by pre-conditioning method according to above flow chart.

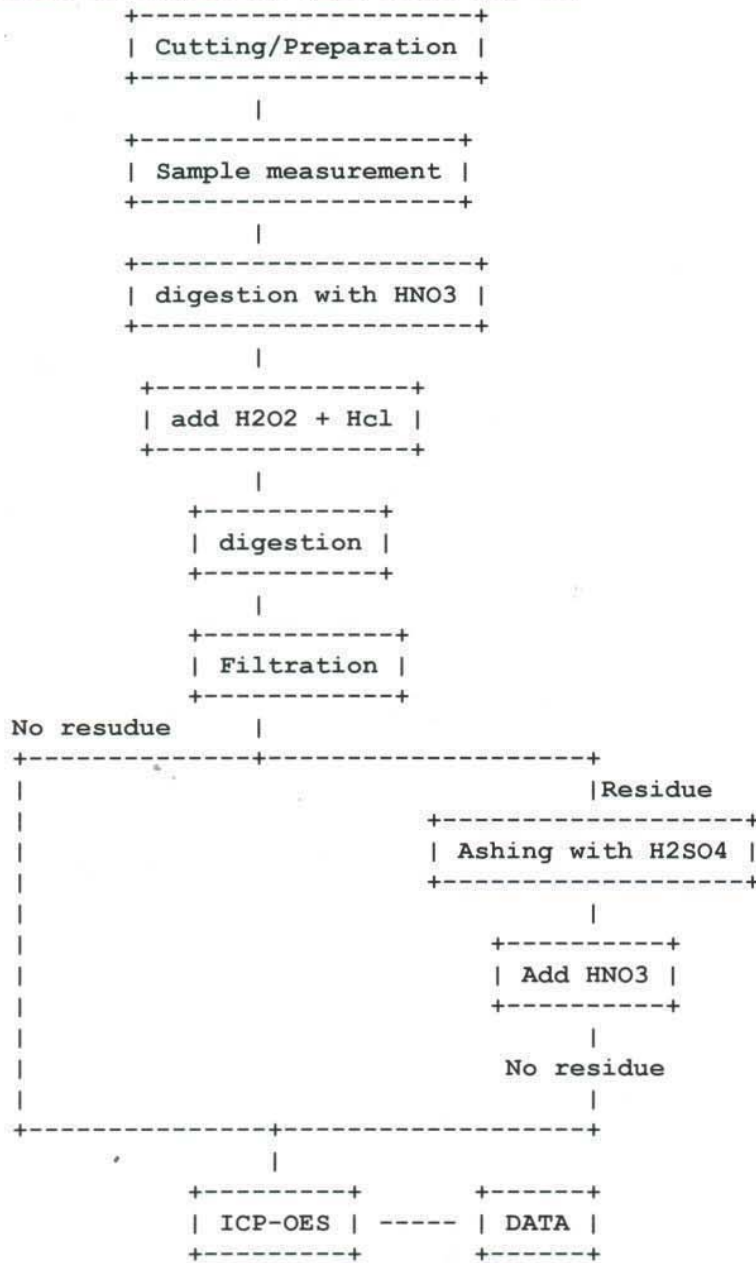
Operator : Siam Polarwut  
 Section Chief : Laddawan Uranpitr

1124956

This Test Report is issued by the Company subject to its General Conditions of Service printed overleaf or available on request and accessible at [www.sgs.com](http://www.sgs.com). Attention is drawn to the limitations of liability, indemnification and jurisdictional issues defined therein. Unless otherwise stated the results shown in this test report refer only to the sample(s) tested. This test report cannot be reproduced, except in full, without prior written permission of the Company. Any unauthorized alteration, forgery or falsification of the content or appearance of this report is unlawful and offenders may be prosecuted to the fullest extent of the law.



Flow chart of digestion (EPA 3050B for Cd)



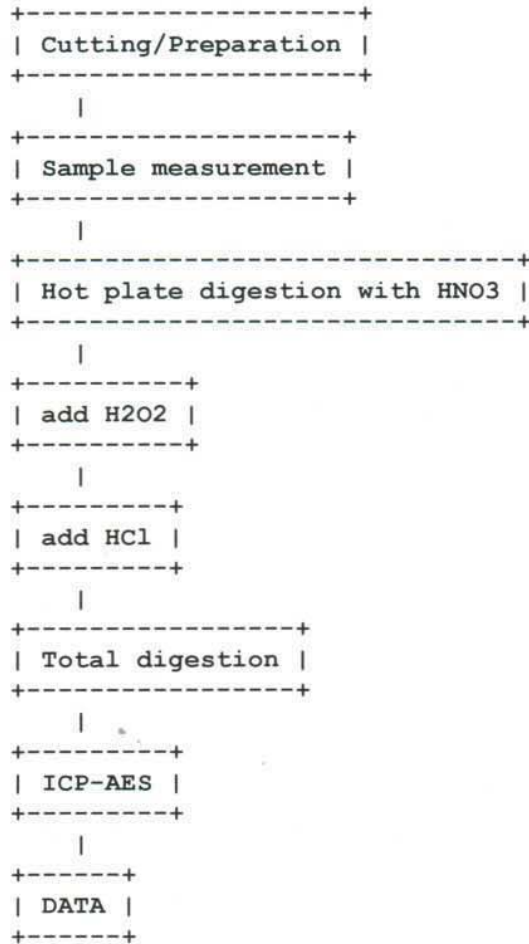
The samples were dissolved totally by pre-conditioning method according to above flow chart.

Operator : Siam Polarwut  
 Section Chief : Laddawan Uranpitr

1124956

This Test Report is issued by the Company subject to its General Conditions of Service printed overleaf or available on request and accessible at [www.sgs.com](http://www.sgs.com). Attention is drawn to the limitations of liability, indemnification and jurisdictional issues defined therein. Unless otherwise stated the results shown in this test report refer only to the sample(s) tested. This test report cannot be reproduced, except in full, without prior written permission of the Company. Any unauthorized alteration, forgery or falsification of the content or appearance of this report is unlawful and offenders may be prosecuted to the fullest extent of the law.

Flow chart of digestion (Wet decomposition for Hg)

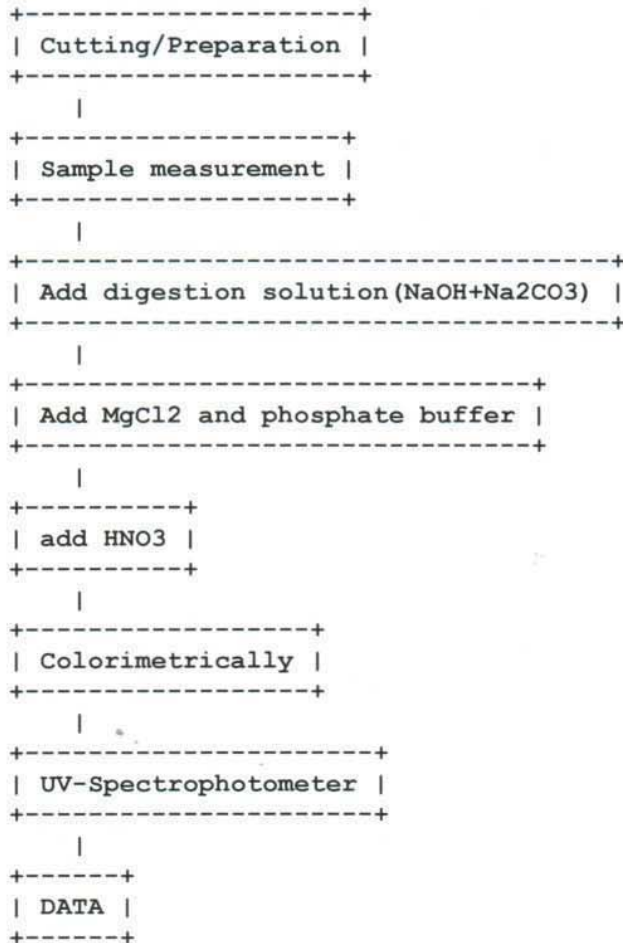


The samples were dissolved totally by pre-conditioning method according to above flow chart.

Operator : Siam Polarwut  
Section Chief : Laddawan Uranpitr

1124956 This Test Report is issued by the Company subject to its General Conditions of Service printed overleaf or available on request and accessible at [www.sgs.com](http://www.sgs.com). Attention is drawn to the limitations of liability, indemnification and jurisdictional issues defined therein. Unless otherwise stated the results shown in this test report refer only to the sample(s) tested. This test report cannot be reproduced, except in full, without prior written permission of the Company. Any unauthorized alteration, forgery or falsification of the content or appearance of this report is unlawful and offenders may be prosecuted to the fullest extent of the law.

Flow chart of digestion (EPA 3060A, 7196A for Cr(VI))

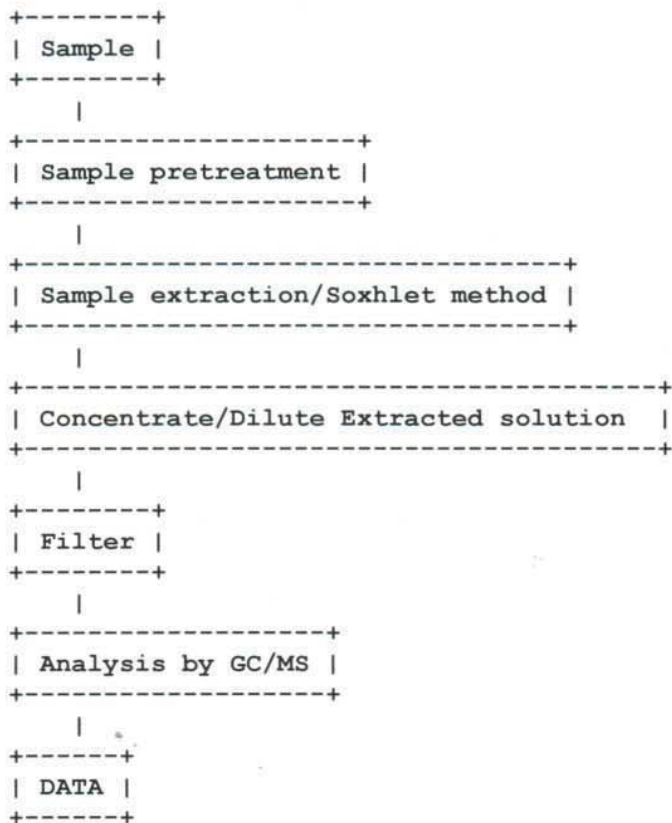


Operator : Varaporn Chaihanit  
Section Chief : Laddawan Uranpitr

1124956

This Test Report is issued by the Company subject to its General Conditions of Service printed overleaf or available on request and accessible at [www.sgs.com](http://www.sgs.com). Attention is drawn to the limitations of liability, indemnification and jurisdictional issues defined therein. Unless otherwise stated the results shown in this test report refer only to the sample(s) tested. This test report cannot be reproduced, except in full, without prior written permission of the Company. Any unauthorized alteration, forgery or falsification of the content or appearance of this report is unlawful and offenders may be prosecuted to the fullest extent of the law.

Flow chart of PBBs/PBDEs



Operator : Prapapan Puengpatiparn  
Section Chief : Sul kifli Mama

1124956

This Test Report is issued by the Company subject to its General Conditions of Service printed overleaf or available on request and accessible at [www.sgs.com](http://www.sgs.com). Attention is drawn to the limitations of liability, indemnification and jurisdictional issues defined therein. Unless otherwise stated the results shown in this test report refer only to the sample(s) tested. This test report cannot be reproduced, except in full, without prior written permission of the Company. Any unauthorized alteration, forgery or falsification of the content or appearance of this report is unlawful and offenders may be prosecuted to the fullest extent of the law.



SAMPLE/ATTACHMENT PICTURE



\*\*\*\*\* End of Report \*\*\*\*\*

1124956

This Test Report is issued by the Company subject to its General Conditions of Service printed overleaf or available on request and accessible at [www.sgs.com](http://www.sgs.com). Attention is drawn to the limitations of liability, indemnification and jurisdictional issues defined therein. Unless otherwise stated the results shown in this test report refer only to the sample(s) tested. This test report cannot be reproduced, except in full, without prior written permission of the Company. Any unauthorized alteration, forgery or falsification of the content or appearance of this report is unlawful and offenders may be prosecuted to the fullest extent of the law.